

# THE PHILADELPHIA LAWYER

Vol. 75, No. 3

Philadelphia Bar Association Quarterly Magazine

Fall 2012

## Justice Gap

The Value of Civil Legal  
Assistance to the Poor

BY LOUIS S. RULLI



10 Questions for  
Richard L. Scheff

BY CHANCELLOR JOHN E. SAVOTH



The Barristers  
of Summer

BY ANGUS LOVE



# You haven't taken a bailout. Neither have we.

Since 1894, Ameriprise Financial has worked hard to give our clients a future better than today - never losing sight of our clients' best interests or taking a bailout. Discover the one-to-one relationship you deserve. Call me for a complimentary 30-minute consultation

Financial Planning & Investment Management Services.

**Call me today at (855) 202.1493**

Thomas Mc Devitt, CFA, CFP®  
Financial Advisor  
Associate Vice President

Just minutes from Center City Philadelphia.  
Home appointments welcomed.

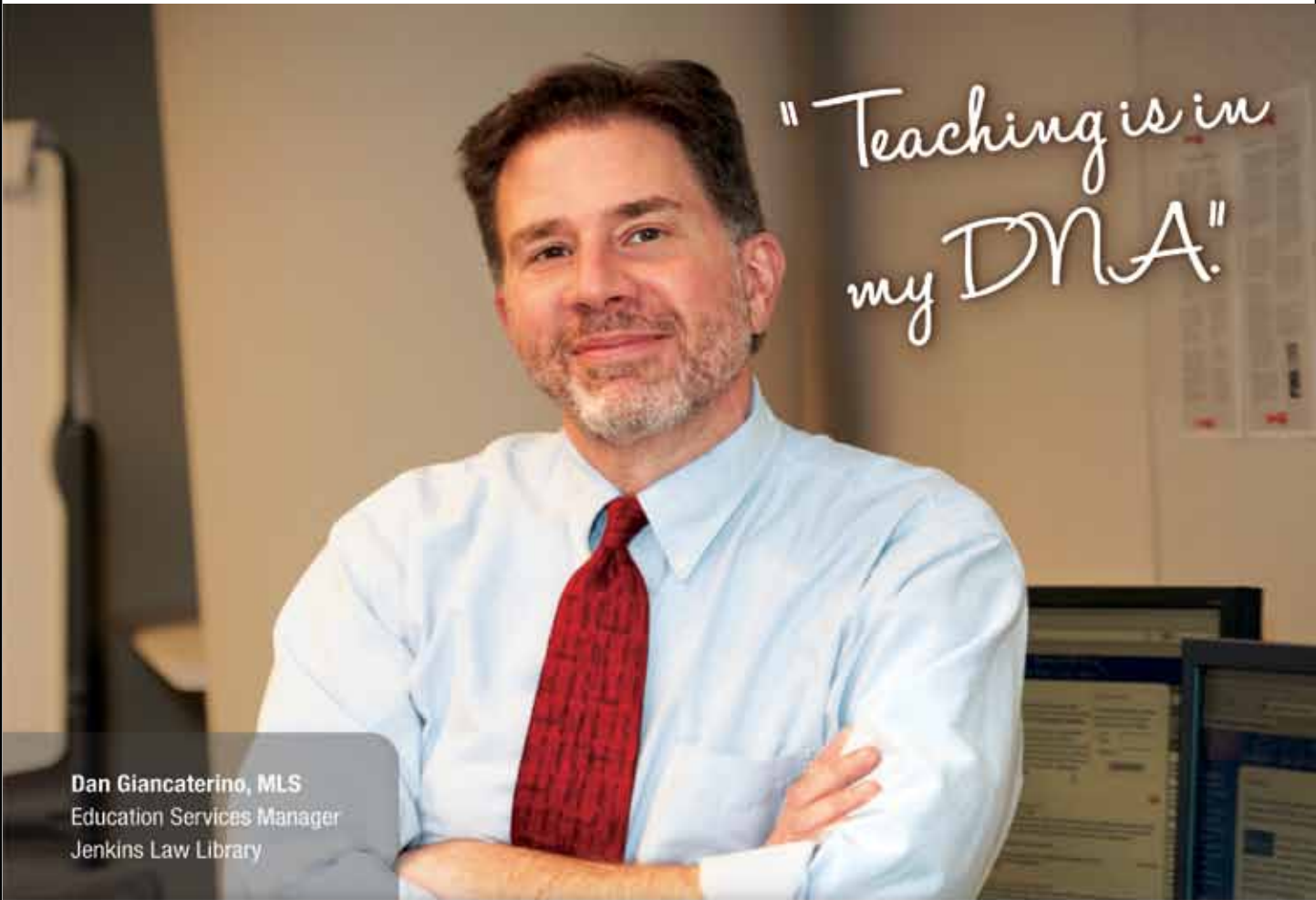


1000 Atrium Way  
Mount Laurel, NJ, 08054



[thomas.a.mcdevitt@ampf.com](mailto:thomas.a.mcdevitt@ampf.com)





"Teaching is in  
my DNA!"

Dan Giancaterino, MLS  
Education Services Manager  
Jenkins Law Library

**CONSULT WITH THE JENKINS TEAM. JOIN US FOR OUR  
CLE CLASSES. TAKE ADVANTAGE OF MEMBER BENEFITS:**

- Personalized, hands-on CLE classes
- Access to the nation's most comprehensive legal resource center
- Assistance for obscure documents through "Ask a Librarian" research services
- Document delivery from our collection or other institutions
- Conference/training room rentals and office center services

Our expert team supports your practice through specialized research and educational services. Join our 7000+ member base today.

**Call us today: 215.574.1505**  
To take advantage of our promotional rate, use promo code: **2012-09-01**

[www.jenkinslaw.org](http://www.jenkinslaw.org)

833 Chestnut Street, Suite 1220  
Philadelphia, PA 19107

 **Jenkins**  
LAW LIBRARY

# THE PHILADELPHIA LAWYER CONTENTS

Vol. 75, No. 3

Philadelphia Bar Association Quarterly Magazine

Fall 2012

## FEATURES



### 12 **Annals of Justice – A Simple Will**

What should have been just the simple preparation of a will turns out to be much more

BY STEVE LACHEEN

### 14 **10 Questions for Richard L. Scheff**

Richard L. Scheff is chairman of Montgomery McCracken Walker & Rhoads LLP, a Philadelphia law firm celebrating its 100th anniversary this year

BY CHANCELLOR JOHN E. SAVOTH

### 21 **Bending Toward Justice**

The winning essay in the Justice Ruth Bader Ginsburg Pursuit of Justice Legal Writing Competition

BY MARK FRANEK

### 22 **Connected by Bars**

Philadelphia, Lyon lawyers renew ties in twinning program

BY ENID ADLER

### 24 **Money Well Spent**

The value of civil legal assistance to the poor can be measured in millions of dollars and thousands of jobs

BY LOUIS S. RULLI

### 30 **Filling the Gaps – The First Judicial District’s Judicial Fellowship Program**

Program helps law school graduates gain experience while giving city judges extra help in chambers

BY CHAPIN F. CIMINO

### 35 **The Barristers of Summer**

Teams of lawyers leave their briefcases on the bench and settle their differences on the diamond

BY ANGUS LOVE

### 38 **Joe Paterno – Bad Samaritan**

Although the late Penn State football coach broke no laws by not reporting child abuse, he should have done more

BY JENNIFER R. EWING

## DEPARTMENTS

### 4 **From the Editor** BY JUSTINE GUDENAS

### 6 **Briefs**

### 7 **In Memoriam**

### 8 **Zoning and Land Use Law**

BY OWEN FRANKLIN AND CHERYL L. GASTON

Key changes in Philadelphia’s new zoning code

### 11 **Ethics**

BY DAVID I. GRUNFELD

Dealing with parties related to your client

### 42 **Technology**

BY DANIEL J. SIEGEL

Welcome to the world of e-discovery

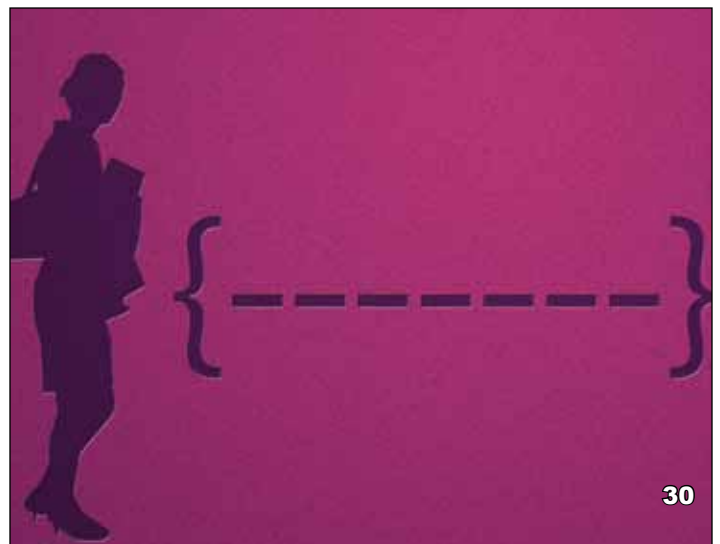
### 46 **Book Review**

BY MEGAN M. KEARNEY

*Angel of Death Row: My Life as a Death Penalty Defense Lawyer*

### 48 **That Was Then - 1992**

*The Philadelphia Lawyer* magazine unveiling





# PRE-SETTLEMENT FUNDING FOR LEGAL PROFESSIONALS

## Legal Fees Paid **NOW!**

- Pre-Trial Settlement Conference
- Settled Cases
- Delayed Payments
  - Medicare Liens & Set Asides (MSA)
  - Special Needs Trust (SNT)
  - Mcare Fund
  - Political Subdivisions
- Court Approval of Minors, Wrongful Death & Survivor Actions
- Jury Verdicts on Appeal

<b>Fees range</b>	\$50,000 @ 3.5% = \$1,750
<b>from 3.5%</b>	\$25,000 @ 4.0% = \$1,000
<b>to 10%</b>	\$15,000 @ 5.0% = \$750
<b>per month</b>	\$5,000 @ 10% = \$500



**We are Lawyers Providing Cash Flow Solutions for Lawyers & Their Clients**



**LAWYERS**  
FUNDING GROUP, LLC

No Credit Checks  
No Compounding

**Investment Opportunities Available**

Minimum 12% APR • Self-Directed IRA Eligible

2 Penn Center, Suite 1700, 1500 JF Kennedy Blvd., Philadelphia, PA 19102

**LawyersFundingGroup.com • (215) 569-0111**

Contact: **Alan R. Zibelman**, Esquire, Managing Member